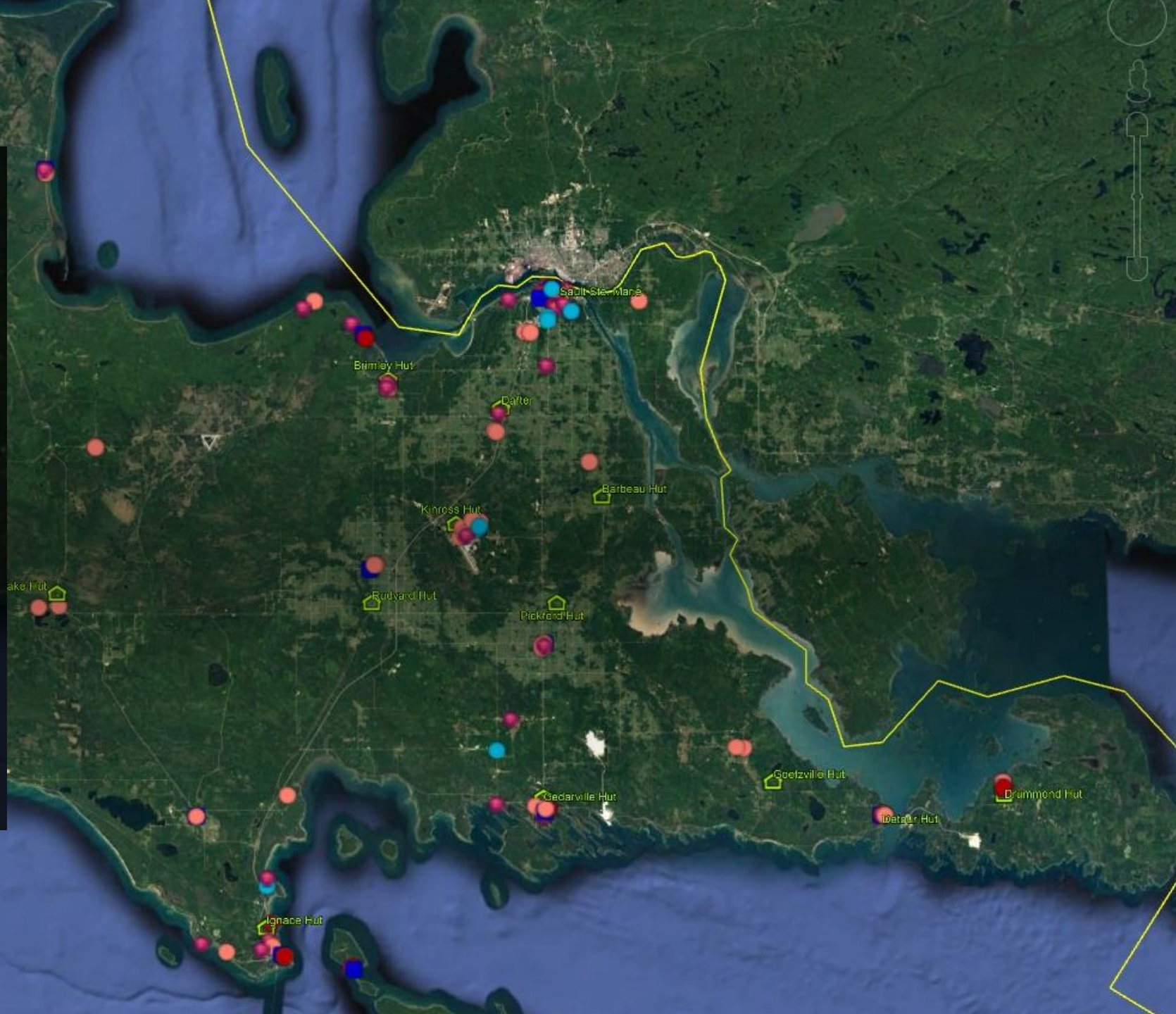


# EUPCONNECT COLLABORATIVE

4.30.2021

Jason Kronemeyer, Director of Technology  
Angie McArthur, Superintendent  
EUP Intermediate School District

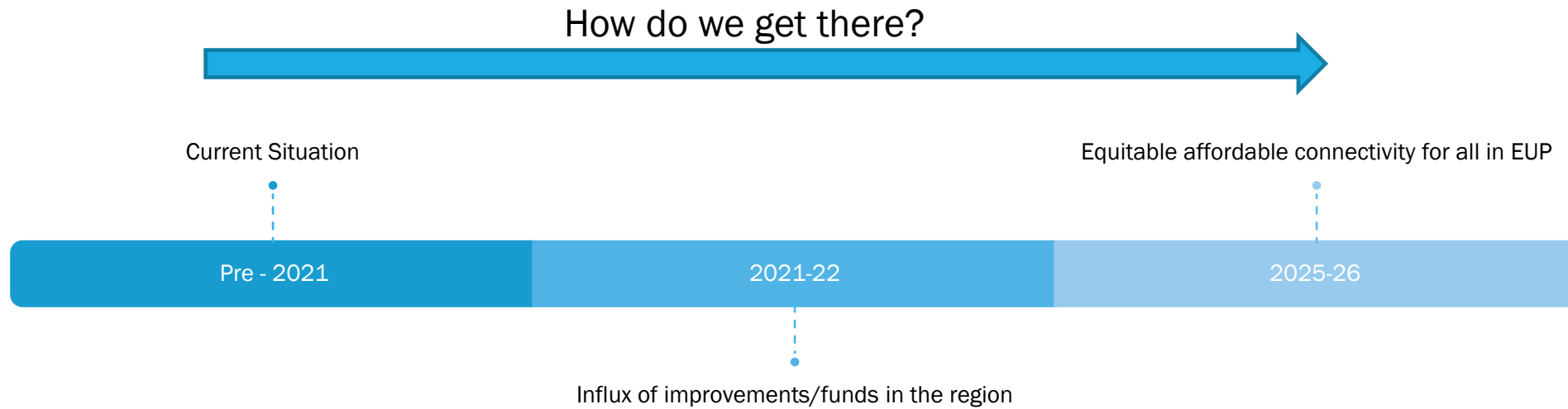




**DO WE AGREE THAT WE NEED EQUITABLE AFFORDABLE  
CONNECTIVITY FOR ALL CITIZENS IN THE EUP?**

**DO WE AGREE THAT COMMUNITIES WORKING INDEPENDENTLY HAS  
NOT BEEN THE SOLUTION FOR CONNECTIVITY?**

# THE PATH TO CONNECTIVITY



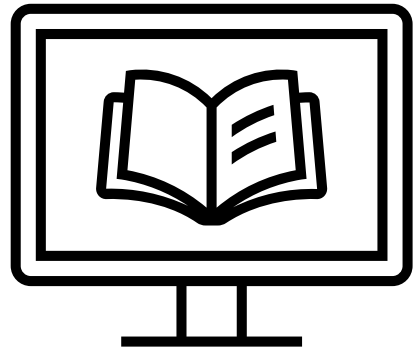
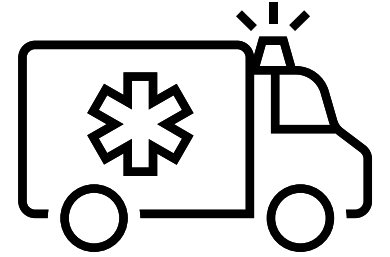
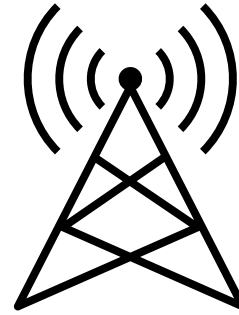
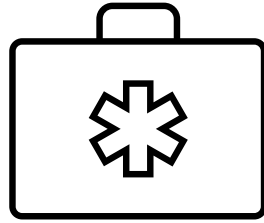
# THE GOLDEN OPPORTUNITIES

FCC:

\$37 million – Rural Digital Opportunity Fund - Atlantic Engineering Group – build 1,500 fiber miles in EUP

American Rescue Plan

- \$7.171 Billion – Emergency Connectivity Fund
  - E-Rate program to support connectivity to students' homes.
- \$219.8 Billion – State and Local Fiscal Recovery Funds
  - Funds to local governments which may be used to support connectivity.
- \$9.961 Billion – Homeowner Assistance Fund
  - Funds which may be used to support internet service expense.
- 1 Billion - NTIA Tribal Connectivity Grants
  - Supports connectivity for the tribal communities.
  - Sault Tribe, Bay Mills Indian Community and Bay Mills Community College are eligible.
- Locally - \$17 million to EUP Schools, \$10 million to 3 counties, \$5 million to townships



We know what works.

Are we ready?

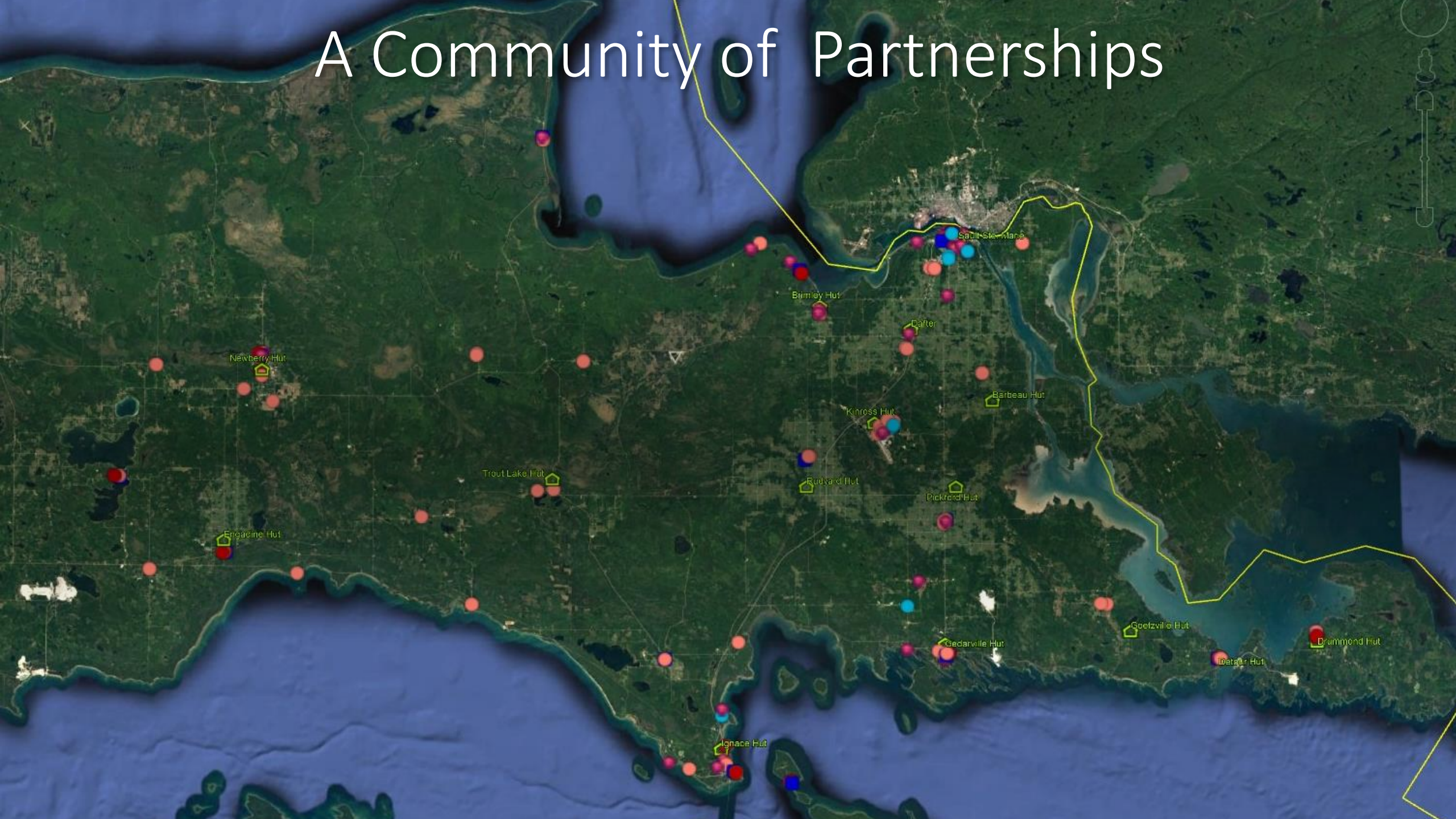


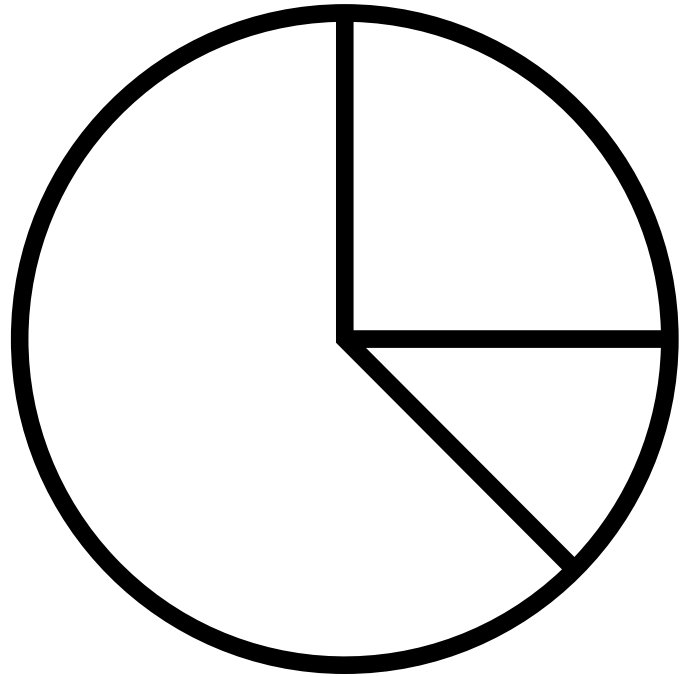
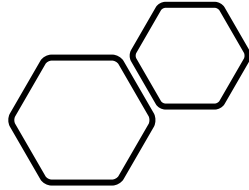


# Community of Partnerships

Partner EUP!

# A Community of Partnerships



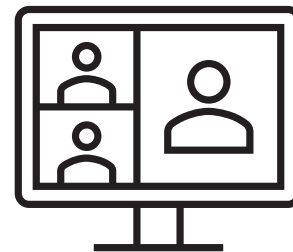
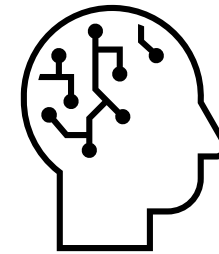
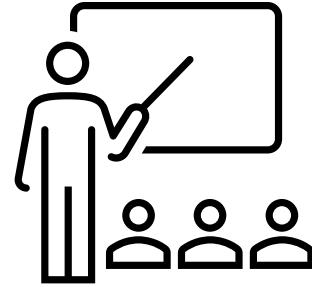



Pool our  
resources.



# Community Service

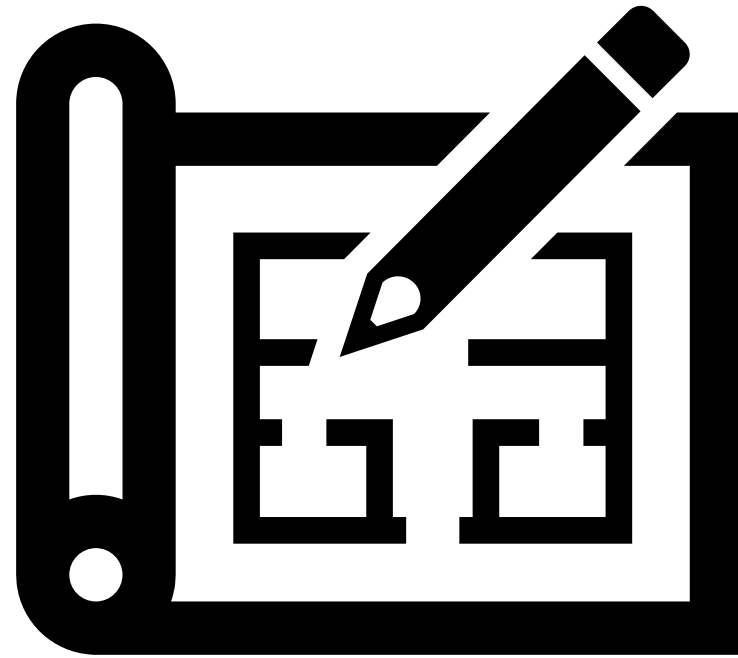
Develop the digital literacy of our communities through local educational and technical support programs.





# We've got our blueprint.

EUP Connect Collaborative  
supports the buildout by building  
relationships to move the region  
from under-served to well-served.





## **EUPCONNECT COLLABORATIVE**

**2 YEAR COMMITMENT**

**BUDGET - ESTIMATED 3% OF FEDERAL FUNDS = \$1 MILLION**

**\*SHARED BETWEEN 17 SCHOOLS/39 TOWNSHIPS/3 COUNTIES/  
2 TRIBES/BUSINESS PARTNERS/PHILANTHROPIC PARTNERS**

**SHARED GOVERNANCE MODEL TO RECOGNIZE A UNIFIED SOLUTION**



## WHAT IF WE COMBINE FORCES INTO A COLLABORATIVE?

- Advisory Group of 20 including
  - EUPISD Director of Technology
  - Project Manager
  - Representative Local School Superintendents
  - Representative Townships
  - Legislative Liaison
  - Center 4 Change representative
  - EDC Representatives
  - Tribal Representatives
  - Higher Education Representatives
- Build a system of multi-layered, redundant safe connectivity
- Identify and plan for ongoing improvements for sustainable service



# LET'S BRAINSTORM

Comments? Share with the group

or

Copy this link to access Padlet

<https://padlet.com/angiemcarthur/6r1qh6ywqdgjclh>

Please create a sticky note and share a question or thought or idea you have about the EUPConnect Collaborative.



## NEXT STEPS

- Survey attendees for interest – link contact information in the chat
- Organize collaborative advisory group
- Engage the consultant
- Create legal agreements/draft resolutions
- Ultimately provide connectivity for all citizens in the EUP
  
- Contact – [angiem@eupschools.org](mailto:angiem@eupschools.org) [jasonk@eupschools.org](mailto:jasonk@eupschools.org)

An aerial satellite-style map of a region, likely in the Pacific Northwest, showing a large body of water on the left and right, and a central landmass. The map is overlaid with a grid and numerous colored dots (red, blue, green, orange) representing various locations. Several of these locations are labeled with names and small house icons: Newberry Hut, Engine Hut, Trout Lake Hut, Rudyard Hut, Kinross Hut, Barbeau Hut, Dafter, Brimley Hut, Sault Ste. Marie, Cedarville Hut, Goetzville Hut, Ignace Hut, and Drummond Hut. A yellow line traces a path or boundary across the landmass. The text 'EUP Connect: A regional collaborative for safe, secure, connected communities' is overlaid in white on the central part of the map.

# EUP Connect: A regional collaborative for safe, secure, connected communities